

***i* HIGH STRUCTURAL
ERECTORS LLC**
An Affiliate of High Industries Inc.



ABOUT HIGH STRUCTURAL ERECTORS...

- High Structural Erectors LLC erects various steel and precast structures and specializing in precast concrete parking garages and architectural precast building cladding. Private construction owners and contractors rely on High to meet the economic and scheduling demands of infrastructure and commercial projects large and small.
- However simple or complex your project may be, we're ready to help you plan, coordinate, and erect it successfully.



Decades of Experience

- Our Erection and Construction Services footprint covers clients throughout the Northeast. We provide the field erection services for our affiliates. Our trained crew of professionals includes in-house detailing, erection engineering, project managers, foremen and superintendents, certified crane operators, and seasoned ironworkers.
- Project success is a function of communication. We ensure that all parties have timely information and that our teams meet your expectations. If you need preconstruction advice, call us. We have earned a reputation for smart, unique and effective solutions to difficult challenges.
- With expertise rooted in decades of project experience, we are ready to serve your project needs.





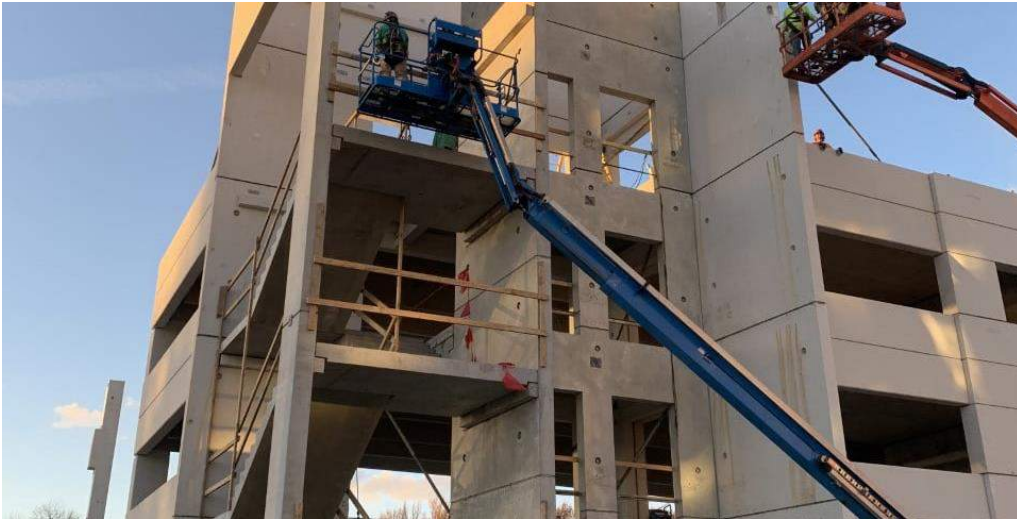
Steel and Precast Erection Specialists

<https://www.high.net/High-Structural-Erectors/>



Decades of Experience

<https://www.high.net/High-Structural-Erectors/>



High Structural Erector's staff has over **extensive** group of **field personnel** that are extensively trained and include **Certified Crane Operators** and **Professional Engineer** on Staff.

We provide General Contractors with a full line of services including..

- **Erection of steel and concrete Structures**
- Bridge Steel rehabilitation and concrete repair
- **Heat straightening of damaged girders**
- Erection of precast concrete, architectural precast cladding and parking garages and other building construction.
- Site Logistics

HSE maintains relationships with crane rental sources to furnish equipment for any project needs.

Our Team of Trained Professionals

- AISC – Advanced Certified Steel Erectors With Bridge Endorsement
- PCI - A & S2 - Certified Erector
- PCI - Certified Field Auditors (CFA)
- Licensed Professional Engineers (PE)

<https://www.high.net/High-Structural-Erectors/>



Past High Structural Erector Projects

- I-695 / MD 25A, I-83 / MD25A & Joppa Rd – Baltimore MD
- MD 45 / I-696 – Baltimore MD
- MD 43 / Amtrak – Baltimore MD
- I-95 / I-495 / I-295 Interchange – Prince Georges County MD
- Dual Bridge # 16028 on MD 201 Over Amtrak-Prince Georges County MD
- CSX / MD 450, Upshur Street & Anacostia River-Prince Georges County MD
- I-95 / I-495 / I-295 Interchange - Prince Georges County MD
- MD 174 / I-97 - Prince Georges County MD
- Christiana Mall Interchange, SR1 / I-95 – New Castle DE
- I-495 Capitol Beltway – Hot Lanes Project – Fairfax VA
- Dulles Corridor Metrorail Project – Vienna VA
- Maple St Parking Garage - Allentown PA
- Villanova CEER Building
- I-495 over Rappahannock River – Stafford County VA
- I-495 / I66 Interchange - VA
- PSU Health Hershey Parking Garage –Hershey PA
- I-95 Express Lanes – Stafford County
- Harrisburg Federal Courthouse – Harrisburg PA



GH ST ER

High Industries Inc.



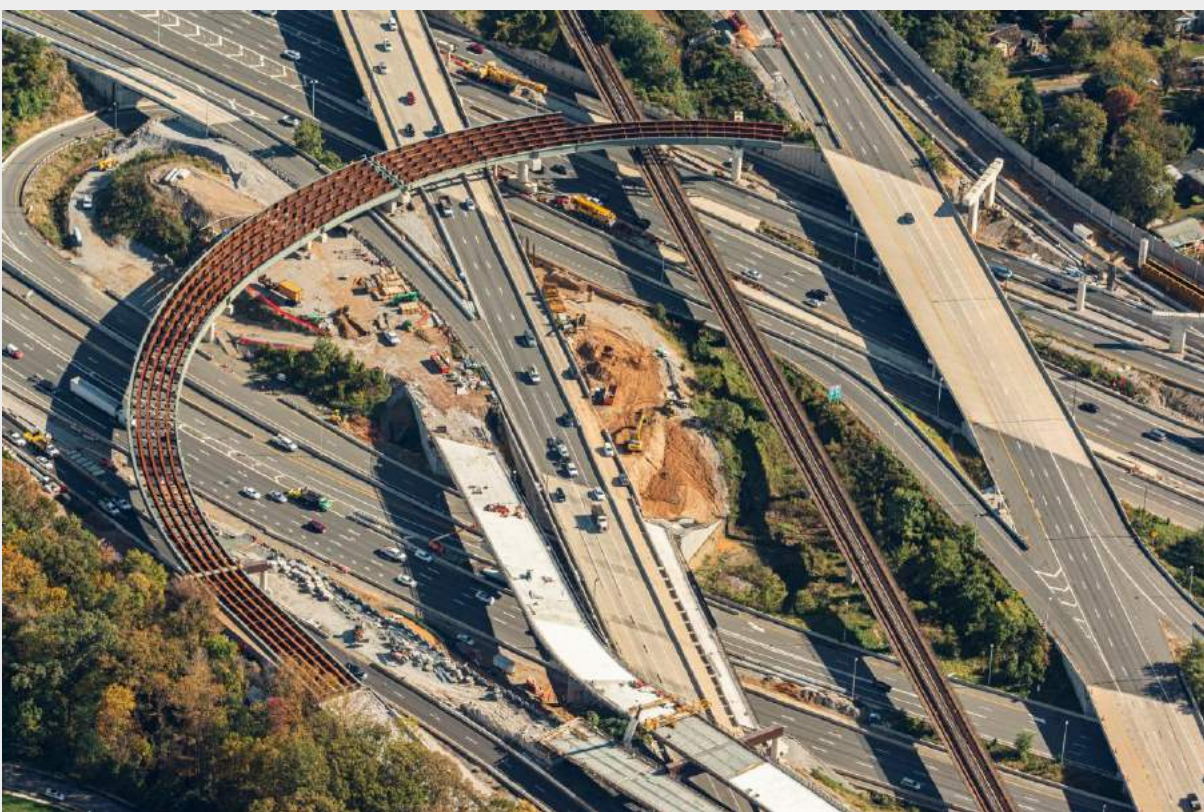
BEFORE



AFTER

Heat Straightening of Damaged Steel





1915 Old Philadelphia Pike
Lancaster PA 17905

For more information contact us at 717-390-4200 Ext.
54638 or email at structuralerectors@high.net

COVERAGE AREA

Pennsylvania, New York, Delaware, Maryland, Virginia, Washington DC



<https://www.high.net/High-Structural-Erectors>